

*An exceptional opportunity –
Live in the heart of an English country park*

A contemporary collection of 1, 2 & 3 bedroom apartments and 2, 3, 4 & 5 bedroom houses set in beautiful grounds, moments from Oakwood & Cockfosters.



Sales & Marketing Suite & Show Home Open Daily
Monday - Saturday 10am - 6pm
Late opening on Thursday 10am - 8pm
Sunday 10am - 4pm

To arrange a viewing please contact us on:
020 3005 5590

Trent Park, Snakes Lane (off Bramley Road),
Enfield, Greater London EN4 0PS

W: Trent-Park.co.uk
E: TrentPark@berkeleygroup.co.uk

Over 250 homes set in 413 acres of captivating natural historic grounds, a quiet escape from the bustle of London life.

*An insider's
guide to
TRENT PARK*

BROUGHT TO YOU BY BERKELEY HOMES



EXPLORE

With 413 acres of parkland to explore and an excellent range of amenities at Cockfosters and Oakwood, take time to discover living at Trent Park

WHAT'S CLOSE BY?

From the eclectic mix of cafés and shops in Cockfosters to the thriving arts scene of North London, discover all the ways to be entertained nearby.

pages 04–07

A TRIP AROUND TRENT PARK

Get to know the great outdoors that's right on your doorstep and see what this country estate has to offer family members of all ages.

pages 08–11

ACTIVE PURSUITS

Follow a delightful section of the "London LOOP", take to the trees with Go Ape, or get fit and healthy even closer to home.

pages 12–15



AN INSIDER'S GUIDE

From days spent stomping through the woods to a quick catch-up over a coffee, Trent Park offers it all.

W

H

WHERE TO...

E

Impressive, invigorating and immersed in history, Trent Park is a huge country estate set in 413 acres of parkland.

A place of intense natural beauty, this is where the aristocracy spent summers and secret listeners helped to win WWII. Now, it's a thriving community that enjoys all the advantages of such close proximity to Cockfosters and Oakwood.

In the heart of North London yet seemingly a million miles away, here you can revel in the great outdoors yet enjoy the convenience of easy access into the city.

Take the time out to discover it all...

R

E



PINT OF MILK
Tesco Express,
153 Bramley Road
N14 4XA
0.9 MILES AWAY



BAKER
Raphael's Bakery & Patisserie,
4 Station Parade, Cockfosters Road
EN4 0DL
1.2 MILES AWAY



POST OFFICE
Two in One Post Office,
209 Bramley Road
N14 4XA
1.0 MILE AWAY



DOCTOR
Bincote Road Surgery,
11 Bincote Road
EN2 7RD
1.9 MILES AWAY



VET
Cockfosters Veterinary Surgery,
23 Heddon Court Avenue, Cockfosters Road
EN4 0DB
1.7 MILES AWAY



FISHMONGER
Poisson
7 Station Parade
EN4 0DL
1.7 MILES AWAY



GYM
Nuffield Health Fitness & Wellbeing Gym,
Tower Point, 52 Sydney Road
EN2 6SZ
3.6 MILES AWAY



FLORIST
Burgeon Floral Design
106 Cockfosters Road
EN4 0DP
1.6 MILES AWAY

Everything you need for an easy and enjoyable life at Trent Park is closer than you think. In nearby Cockfosters and Oakwood, you can find a colourful and cosmopolitan mix of high street and boutique shopping. Whether you are keeping up with your weekly workout in the gym, catching up with friends over coffee, everything you need is right on your doorstep.

EVERYDAY ESSENTIALS

COCKFOSTERS AND OAKWOOD



DENTIST
Cockfosters Dental Clinic,
23, Station Parade
EN4 0DW
1.7 MILES AWAY



GROCERIES
Fio's Food Centre
2-4 Cockfosters Parade
EN4 0BX
1.8 MILES AWAY



CAFÉ & BRASSERIE
La Petite Auberge,
12-13 Heddon Court Parade,
Cockfosters Road. EN4 0DB
1.7 MILES AWAY



ESPRESSO
Miracles Coffee Shop,
6 Cockfosters Parade
EN4 0BX
1.8 MILES AWAY



DELI
Cockfosters Delicatessen,
19 Station Parade, Cockfosters Road
EN4 0DW
1.7 MILES AWAY



GASTROPUB
The Cock Inn,
Chalk Lane
EN4 9HU
0.9 MILES AWAY



PHARMACY
Simmons Pharmacy,
111 Cockfosters Road
EN4 0DA
1.8 MILES AWAY



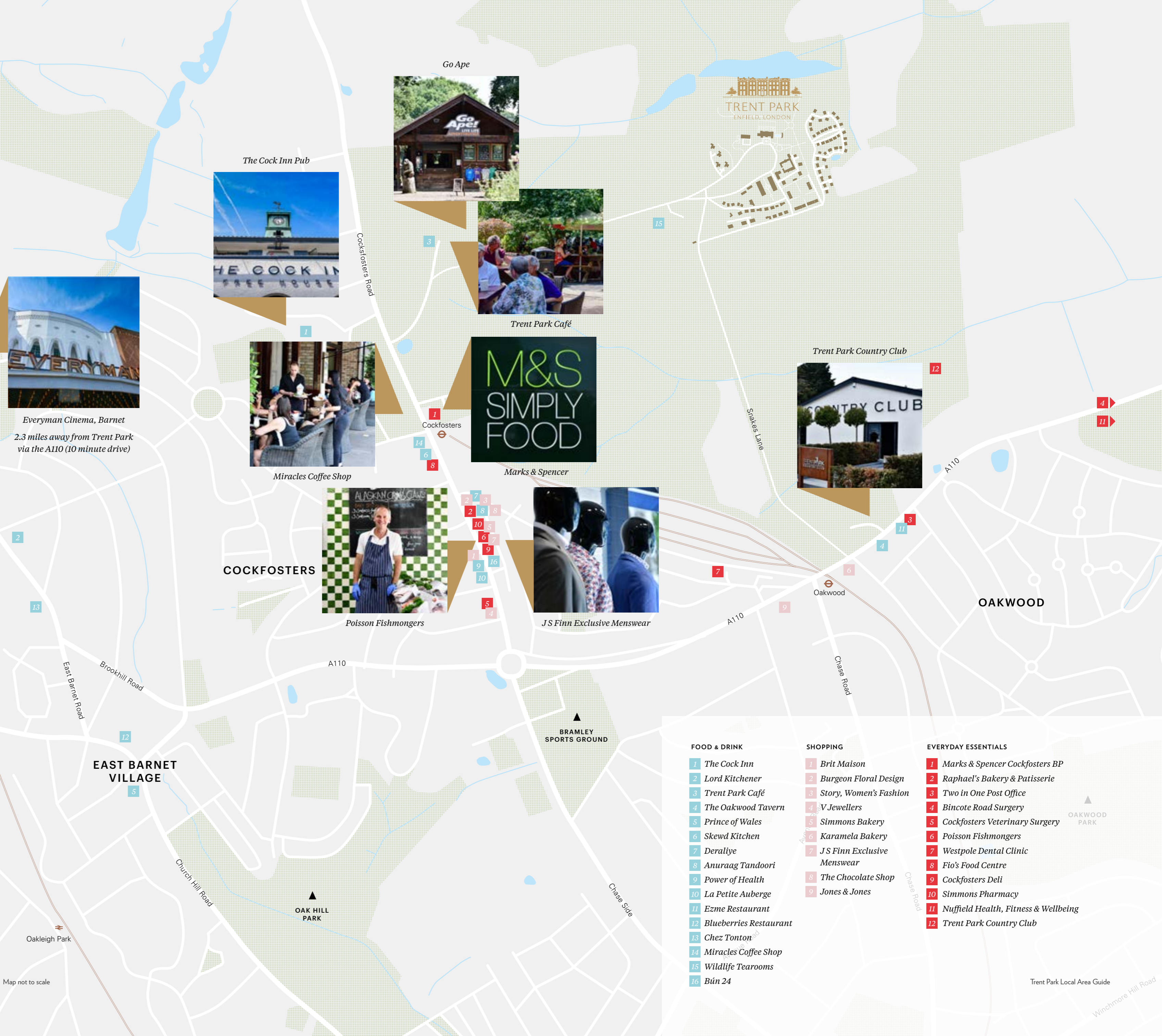
LIBRARY
Oakwood Library,
185-187 Bramley Road
N14 4XA
1.1 MILES AWAY

WHAT'S CLOSE BY?

Trent Park is just moments from a great range of amenities clustered around Cockfosters and Oakwood. The immediate area boasts an impressive array of eateries and places to spend the evening.

A wide selection of restaurants and bars isn't the only attraction. There are plenty of places to indulge in a little retail therapy too, including delightful independent boutiques. You'll also find everything you need for everyday life close by as well as a few special places that are worth heading further afield to enjoy.

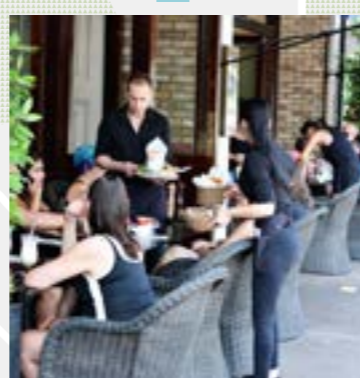
Trent Park is ideally oriented within a short distance of East Barnet Village and Cockfosters to the south west and Oakwood to the south east.



Everyman Cinema, Barnet
2.3 miles away from Trent Park via the A110 (10 minute drive)



The Cock Inn Pub



Miracles Coffee Shop



Poisson Fishmongers



Go Ape



Trent Park Café



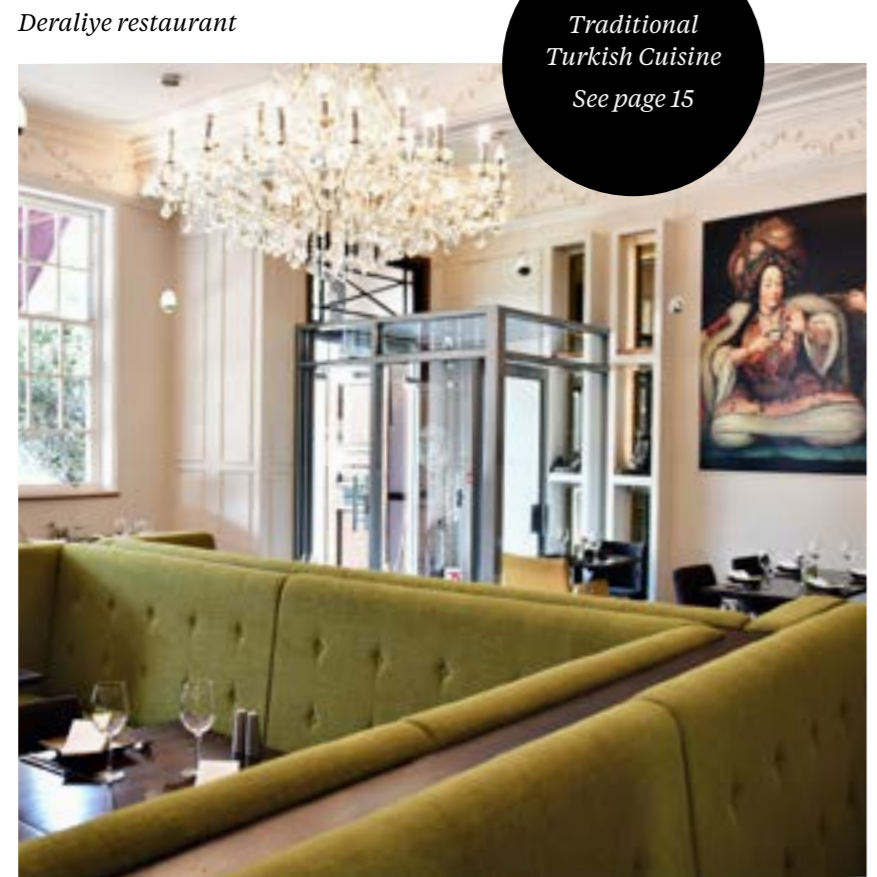
Marks & Spencer



JS Finn Exclusive Menswear



Trent Park Country Club



Deraliye restaurant
Traditional Turkish Cuisine
See page 15

FOOD & DRINK	SHOPPING	EVERYDAY ESSENTIALS
1 The Cock Inn	1 Brit Maison	1 Marks & Spencer Cockfosters BP
2 Lord Kitchener	2 Burgeon Floral Design	2 Raphael's Bakery & Patisserie
3 Trent Park Café	3 Story, Women's Fashion	3 Two in One Post Office
4 The Oakwood Tavern	4 V Jewellers	4 Bincote Road Surgery
5 Prince of Wales	5 Simmons Bakery	5 Cockfosters Veterinary Surgery
6 Skewd Kitchen	6 Karamela Bakery	6 Poisson Fishmongers
7 Deraliye	7 JS Finn Exclusive Menswear	7 Westpole Dental Clinic
8 Anuraag Tandoori	8 The Chocolate Shop	8 Fio's Food Centre
9 Power of Health	9 Jones & Jones	9 Cockfosters Deli
10 La Petite Auberge		10 Simmons Pharmacy
11 Ezme Restaurant		11 Nuffield Health, Fitness & Wellbeing
12 Blueberries Restaurant		12 Trent Park Country Club
13 Chez Tonton		
14 Miracles Coffee Shop		
15 Wildlife Tearooms		
16 Bún 24		

Map not to scale

New trees, planting will provide a habitat for the existing wildlife at Trent Park

Trent Park

GREAT OPEN SPACE TO EXPLORE

Immerse yourself in the great outdoors. The expansive countryside that stretches for miles in all directions is your backdrop to enjoy an open, naturally inspired way of living.

GREEN CHARACTER

 **413**

acres of Trent Country Park surrounding the development

 **3.5km**

of ungated walking and cycling routes within the wider Trent Country Park

 **30+**

acres of historic landscape reinstated, including Lime Tree Avenue and Wisteria Walk

 **447**

new trees planted across Trent Park

A SIGHT TO BEHOLD

Prepare to be captivated the moment you step outside your front door – a world of natural wonder awaits.



Over 30 different species of birds can be found around the development including; Song Thrush, Tawny Owls, Great Spotted Woodpeckers and Goldfinches

Whatever the season, Trent Park is blessed with stunning scenery, natural habitats and plenty of wildlife to look out for. From roaming deer to migrating birds, you'll find that nature is just as at home here as you are.

To be sure of spotting some of the more interesting species, you can follow one of two dedicated wildlife walking routes.

Take the red route through the Nature Trail, on to the Duke's Pyramid and back past the 'Pineapple'. Or choose the ever so slightly longer yellow route that skirts the edge of Trent Park as far as Sassoon's Obelisk and Camelot Moat before returning home through Moat Wood.



MANDARIN DUCK



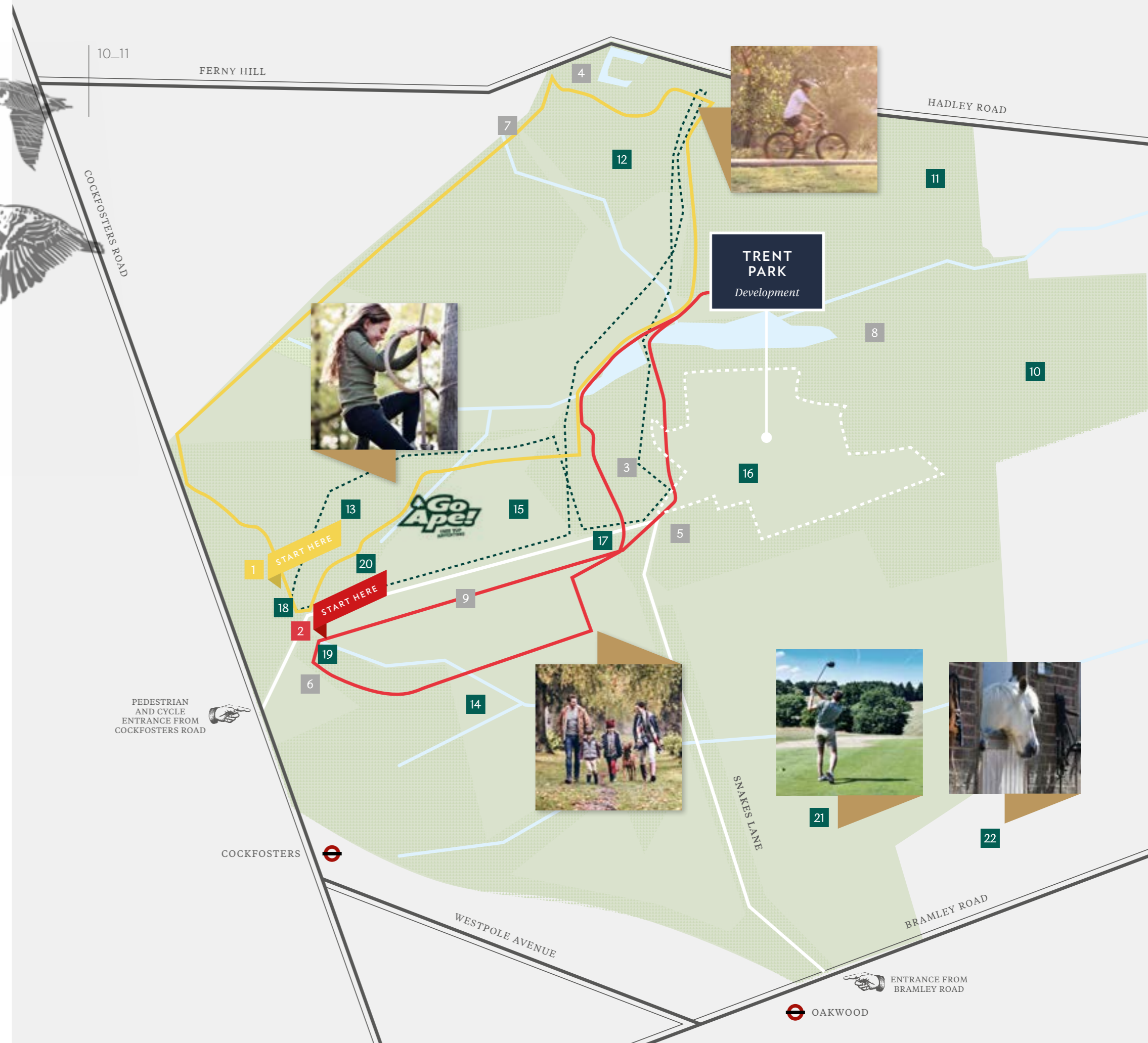
MUNTJAC DEER



GREAT CRESTED GREBE



GREAT SPOTTED WOODPECKER



KEY AREAS TO THE PARK

1 Yellow Walking Route (2.4 miles)

2 Red Walking Route (2.3 miles)

--- Cycle trail

3 Nature Trail

4 Camelot Moat

5 The Emma Crewe 'Pineapple'

6 The Duke's Pyramid

7 Sassoon's Obelisk

8 Water Garden

9 Limes Avenue

10 Williams Wood

11 Ride Wood

12 Moat Wood

13 Oak Wood

14 Church Wood

15 Meadow

16 Daffodil Lawn

17 Wildlife Rescue Centre and Café

18 Children's Play Area (Toddlers)

19 Children's Play Area (Juniors)

20 Go Ape

21 Trent Park Golf Club

22 Trent Park Equestrian Centre

– Yellow walking route

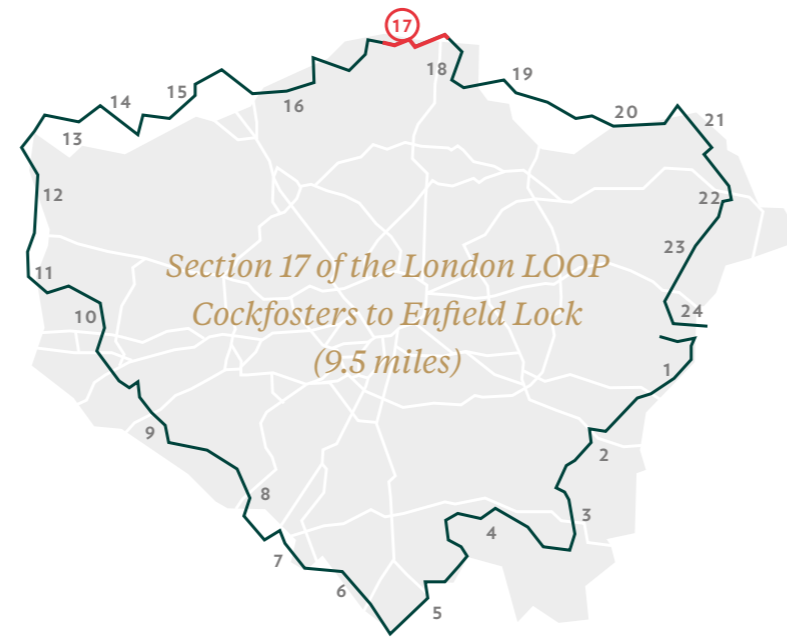
This route will take you to the north west area of the park passing the underground reservoir to the wooded area.

– Red walking route

This route will take you to the east of the park following the Blind Trail then beyond the Go Ape area.

AROUND AND ABOUT

"The London Outer Orbital Path – more commonly known as the "London LOOP" – is a 150-mile (240km) stretch of connected public footpaths around the Capital. Taking you through parks, woods and fields at the edge of the city, it is also affectionately known as the "M25 for walkers".

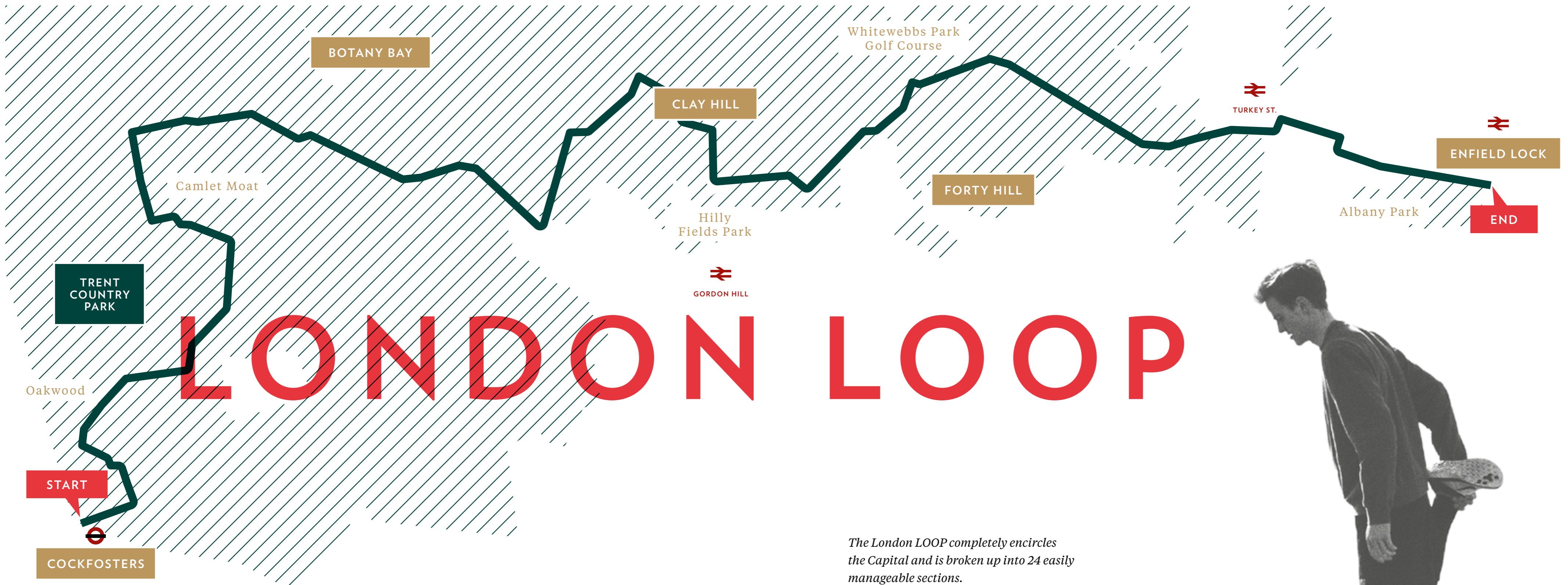


12_13

This is a long and rural section through an area alive with history. It goes by Trent Park, through the farmland of Enfield Chase and Hilly Fields Park and the Forty Hall Estate.

Did you know?

The walk was given an official launch at the House of Lords in 1993. The first section was opened on 3 May 1996, with a ceremony on Farthing Downs, Coulsdon.



The London LOOP completely encircles the Capital and is broken up into 24 easily manageable sections.

Section 17 starts at Cockfosters and winds its way through Trent Park before emerging into the Botany Bay area. It's a delightful footpath that will take you past woods, fields and open countryside. Whether you choose to walk, cycle or run the route, you'll soon find the time has passed and you've swiftly arrived at Enfield Lock on the River Lee.

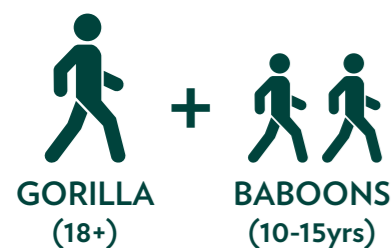
For more information please visit tfl.gov.uk/modes/walking/cockfosters-to-enfield-lock



TREE TOP FUN



SUPERVISION RATIOS



16 & 17 years olds can supervise themselves but not others

MINIMUM AGE:
10 YEARS

MINIMUM HEIGHT:
1.4M (4' 7")

MAXIMUM WEIGHT:
130KG (20.5 STONE)

Unforgettable adventures begin with exhilarating times up in the trees for you and the little ones in your tribe.

Experiencing the true spirit of the great outdoors rarely comes more adrenalin-pumping than this. The treetop adventure at Go Ape Cockfosters will take your breath away as quickly as it creates lifelong memories. In a safe and controlled environment, you and the kids (10-years and older) can enjoy taking fun to a whole new level among the canopy. Challenge your nerve and cross the Indian rope ladder one careful foot step at a time, swing like Tarzan or Jane between trees, or harness up and speed down the 120 metre Alpine Zip Wire at heart-thumping speeds.

OPENING TIMES

These forest doors are open all year round so there's plenty of time to live life adventurously. To see when you can unleash your inner ape visit the website to view available booking dates, times and prices.

goape.co.uk/days-out/london/trent-park

LONGEST ZIP
120
METRES

HIGHEST PLATFORM
16
METRES

LONGEST CROSSING
32
METRES

TOTAL LENGTH
622
METRES



14_15



TRENT PARK EQUESTRIAN CENTRE

A riding school with adorable horses and amazing teachers.

There are few better connections with nature than a horseback ride through the woodlands. Led out by an experienced instructor, you can team up with a four-legged friend and be put through your paces.

OPENING TIMES

MONDAY
Closed

TUESDAY - THURSDAY
9.45am-8.15pm

FRIDAY
9.45am-4.15pm

SATURDAY & SUNDAY
9.00am-4.00pm

CHILDREN'S RIDING LESSONS
From £27 - £80

ADULT'S RIDING LESSONS
From £43 - £100

WILDLIFE CENTRE

TRENT PARK WILDLIFE RESCUE AND AMBULANCE SERVICE

Get up close and personal with the work of those who care for Trent Park's sick and injured wildlife.

The people here are passionate about the animals under their care. For visitors, it's an eye-opening experience and a great place to spend time with the family getting to know more about nature.

OPENING TIME

10.00am - 4.15pm (last entry)
was-enfieldwildlife.org.uk



PLACES TO EAT AND DRINK

Trent Park is surrounded by a mix of welcoming independent bars and pubs, boutique bistros, fine dining restaurants and cafés. Whether you're stopping off for a quick hour or socialising with family and friends, there's always something to tempt your senses.

Relax in a café with a coffee and watch the world go by...



CAFÉS AND



WILDLIFE TEAROOMS

What a hidden gem. I had a fabulous lunch here with my mum. The portions are huge! The staff are amazing and very attentive. The food is good and we could not resist taking away homemade apple strudel for afternoon tea.

Ana R, TripAdvisor

MIDDEYS BRASSERIE & LOUNGE BAR

10 Cockfosters Parade,
Cockfosters Road EN4 0BX
020 8449 8777
middeys.co.uk

MALONE & CO. CAFÉ

6 Burleigh Way,
Enfield EN2 6AE
020 8364 5690
maloneandco.cafe.com

TRENT PARK CAFÉ

Trent Park
EN4 0DL

WILDLIFE TEAROOMS

Trent Park EN4 0JY
0208 344 2785
wras-enfieldwildlife.org.uk

16_17



Unusual food in a fun setting plus attentive service lifted Skewd out of the ordinary and provided an entertaining and rewarding evening.

Hertfordshire Life

Skewd Kitchen serve the best of Anatolian cuisine with a modern take.

SKEWD KITCHEN

12 Cockfosters Parade
020 8449 7771
skewdkitchen.com

Just a mile away from Trent Park



Anatolian Cuisine

Traditional Turkish Cuisine



Deraliye is a fusion between authentic Turkish cuisine and Mediterranean flavours. Located in the heart of Cockfosters, the restaurant has a unique décor that draws inspiration from the Ottoman Empire.

DERALIYE

98 Cockfosters Rd
020 3417 5270
deraliye.co.uk

Just over a mile away from Trent Park

RESTAURANTS

French bistro-brasserie

La Petite Auberge is a beautiful brasserie, restaurant and cocktail bar in Cockfosters influenced by the grandiose bistros of France.

LE PETITE AUBERGE

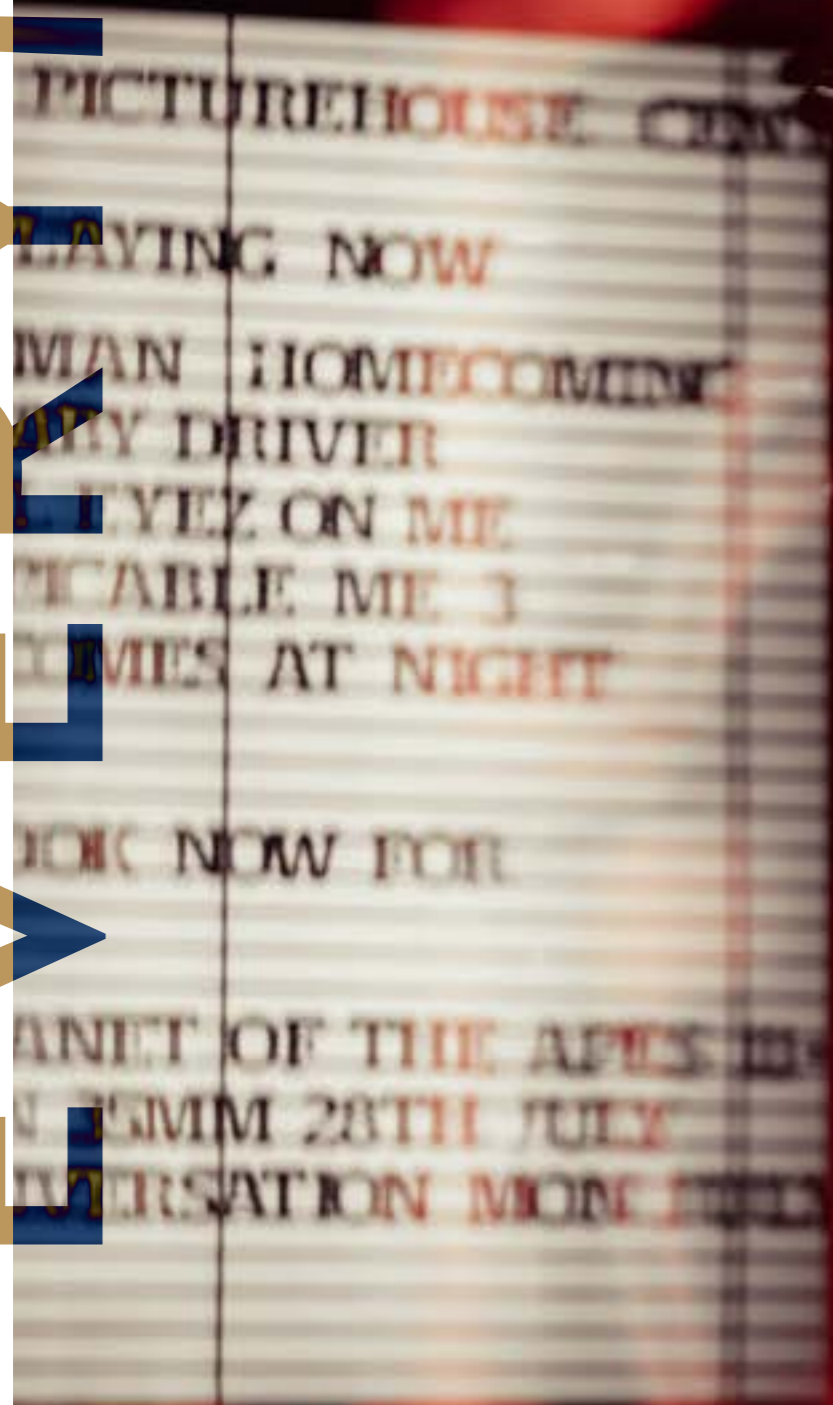
12-13 Heddon Court
Parade, Cockfosters Road
0208 447 1777
petiteauberge.co.uk

Just over a mile away from Trent Park



EVERYMAN

You don't have to go far to enjoy a movie, visit a gallery, catch a live performance, or take part in one yourself. With Central London only 26 minutes away, Trent Park is perfect for when you want to visit the Capital for a slice of city entertainment, too.



ENFIELD AND FURTHER AFIELD

There are many cultural attractions in the area and beyond to enjoy.

The state-of-the-art Everyman cinema in Barnet shows the latest releases in 2-D and 3-D. It also hosts events during the year, broadcasting live opera from The Royal Opera House and performances from The National Theatre.

3.7 miles from Trent Park



ART

FORTY HALL ESTATE

This gracefully restored Grade I listed manor house is set in idyllic landscaped gardens. The museum tells the story of the estate and the 17th century London Lord Mayor, Sir Nicholas Rainton.

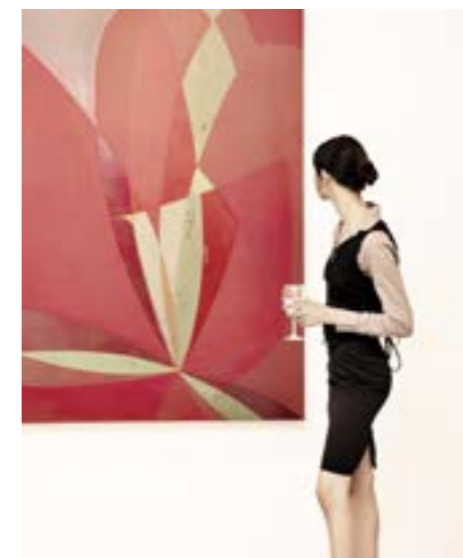
5 miles from Trent Park



GALLERY

ART GALLERIES

South of Trent Park you can find Narenj Art Gallery and Art Ground. To the east, The Step is an intimate bar, café and gallery.



CHICKENSHED THEATRE

Near Chase Side in Southgate and established in 1974, this is a popular and inclusive local theatre space for adult and children's music and drama workshops and performances.

1.6 miles from Trent Park

PROPOSED MUSEUM

The Trent Park Museum tells the story of the secret World War II 'listening' network with the uncovered intelligence playing a significant role in ending the war. The Museum, in the restored Mansion House, provides an inciteful legacy for the nation.

For further details visit trentparkmuseum.co.uk



THEATRE



ALEXANDRA PALACE

A goldmine of things to do, this iconic building plays host to events and activities all year round. Here you can enjoy everything from seasonal ice skating to Go Ape and boating on the lake to fresh produce from the regular farmers' market.

5.9 miles from Trent Park

North London has a wealth of arts and entertainment to enjoy throughout the year. Whether you are a fan of live performances, or you prefer a quiet hour with some extraordinary art, experience some of the best cultural delights the area has to offer.

MUSEUM

POISSON FISHMONGERS
7 Station Parade, Cockfosters

An independent fishmonger with a wide range of catch, mainly caught off the south coast of England during short day and night expeditions.

7 Station Parade, Barnet EN4 0DL
020 8449 0335 poissonfish.com

Just under 2 miles from Trent Park

YOUR LOCAL FISHMONGERS



We offer a huge selection of top quality seafood not found in supermarkets.

A large majority of our fish is sourced from local "day-boats", ensuring top quality and exceptional freshness for our customers.

Poisson Fishmongers

20_21

GRILLED MACKEREL WITH ORANGE SALAD

Oranges work really well with mackerel and make a refreshing addition to this simple, zesty salad. Perfect for lunch!

Recipe

Grilled mackerel with orange salad

🕒 20 MINUTES 🍽️ SERVES 2 👨‍🍳 EASY

Ingredients

New potatoes 200g, 2 Mackerel 120g, Olive oil, 2 segmented oranges, ½ small sliced red onion, 2 handfuls of rocket, 1 tbsp sherry vinegar

Method

Steam or boil the new potatoes until tender, for about 15-20 minutes.

Meanwhile, brush each mackerel all over with 1 tsp oil, season well then grill for 3-4 minutes each side or until cooked through.

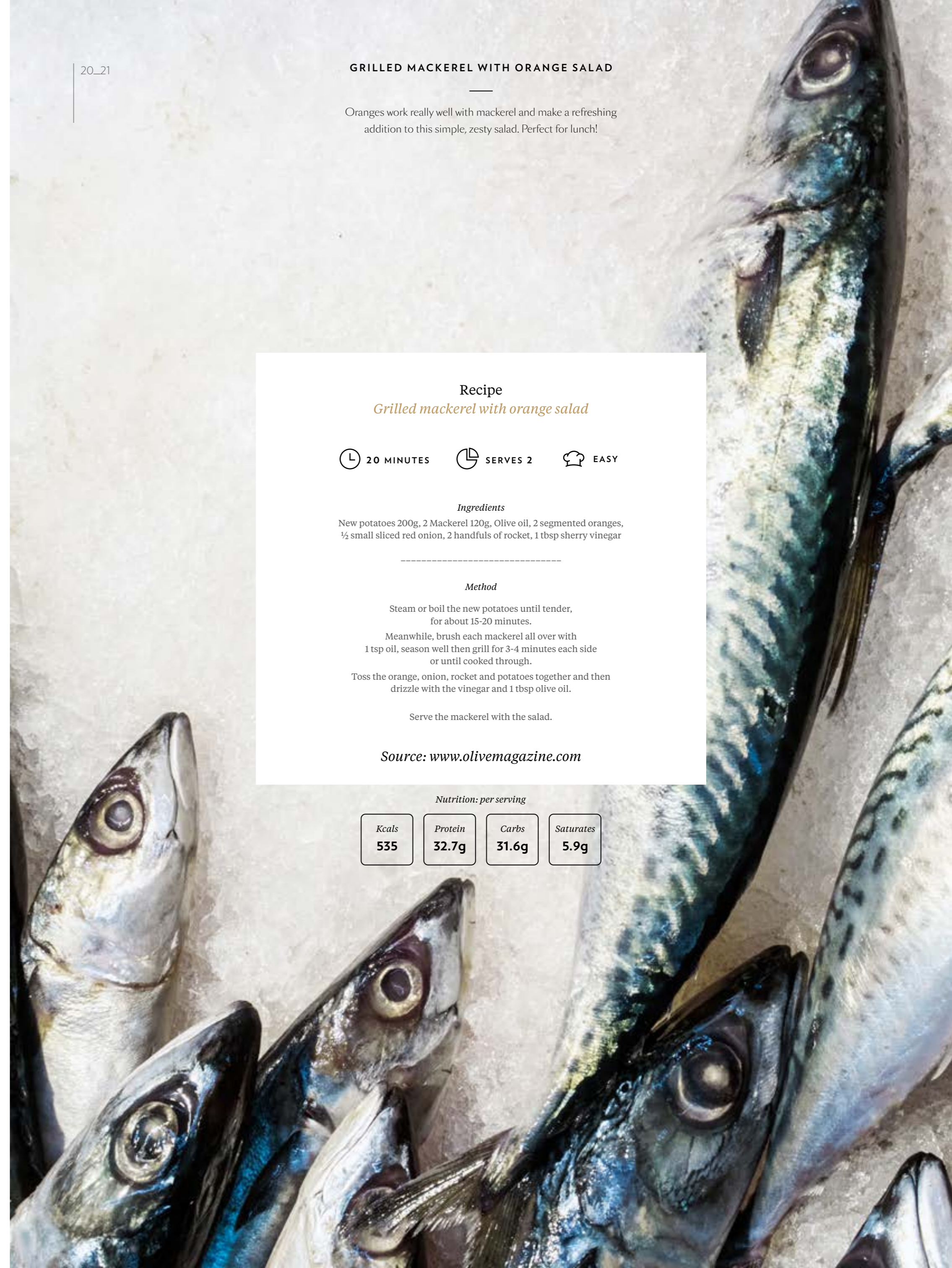
Toss the orange, onion, rocket and potatoes together and then drizzle with the vinegar and 1 tbsp olive oil.

Serve the mackerel with the salad.

Source: www.olivemagazine.com

Nutrition: per serving

Kcals	Protein	Carbs	Saturates
535	32.7g	31.6g	5.9g



Exclusive Belgian Chocolate and wide range of giftware, cards, balloons and new baby gifts available.

THE CHOCOLATE SHOP
Station Parade, Cockfosters Road,
Barnet EN4 0DL
020 8449 7615

Just under a mile away
from Trent Park



22_23

Contemporary
homeware



Brit Maison offers a range of homeware for contemporary living.

BRIT MAISON
9 Heddon Court Parade,
Cockfosters Road,
Barnet EN4 0DB
020 8449 8359

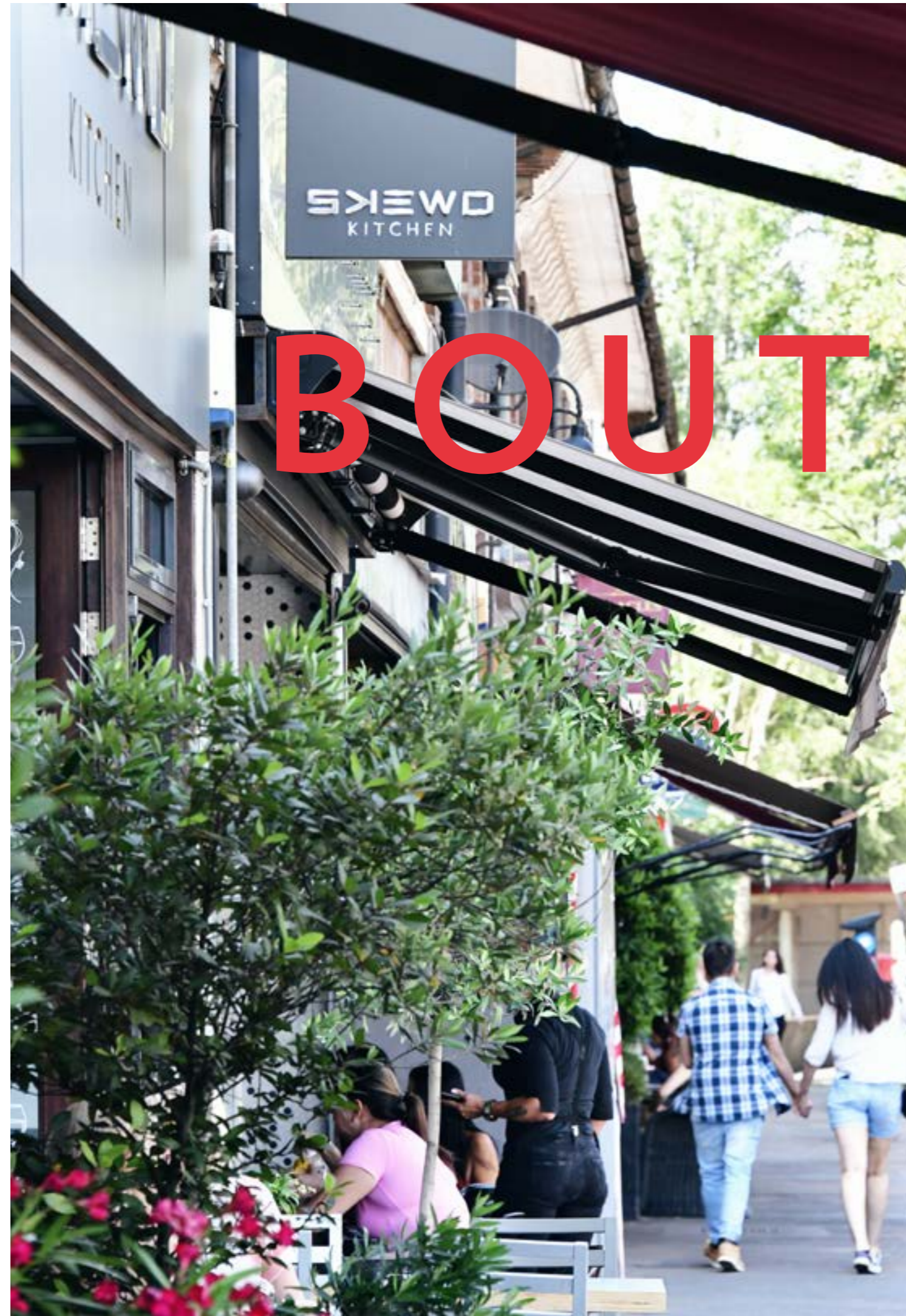
Just under 2 miles away
from Trent Park



The best local seasonal farm produce including free range poultry, freshly baked bread, cakes and pastries as well as gluten-free.

BOTANY BAY FARM SHOP
The Ridgeway, Enfield EN2 8AP
020 8366 4929

Under five miles away
from Trent Park



BOUTIQUES

Award-winning local florist Helen Sawa has been leading the team at Burgeon since 1992.

BURGEON FLORAL DESIGN
106 Cockfosters Road,
EN4 0DP
020 8441 6661
burgeon.co.uk

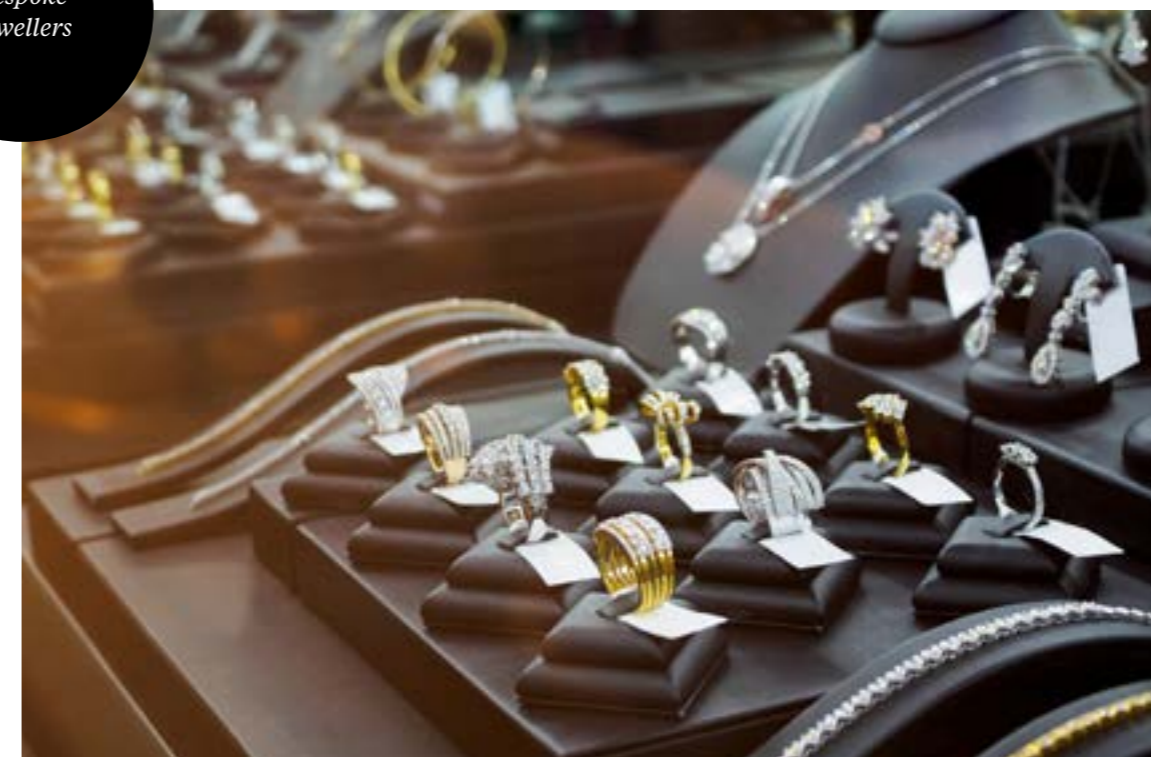
Just under a mile away
from Trent Park

A refined collection of boutique shopping and high street brands will surprise and entice, making this the ideal setting to relax and discover something new.



Creative
Florists

Bespoke
Jewellers



North London's most creative jewellers, where bespoke designs are brought to life.

V JEWELLERS
24, Heddon Court,
27 Cockfosters Road,
EN4 0DB
020 8449 6644
vjewellers.co.uk

Just under 2 miles away from Trent Park

JONES

93 BRAMLEY ROAD, OAKWOOD

HERE TO SERVE

Traditional British tailor

JONES & JONES

93 BRAMLEY ROAD, OAKWOOD

Experts in the art of tailor-made garments, Jones & Jones focus on every detail – from the fine stitching that will finish off a bespoke jacket to their unique approach to customer service.

JONES & JONES
Made to measure, bespoke suits in Oakwood.
93 Bramley Road
N14 4EY
020 8882 8949
tailors-london.com
1 mile away from Trent Park

Traditional British tailor

JONES & JONES

93 BRAMLEY ROAD, OAKWOOD



24_25

Story offers something different from the usual shopping experience. With the latest designer outfits and a personal styling service available, you'll enjoy one-on-one time with people who'll find exactly what you're looking for.

PERSONAL STYLING SERVICE



STORY

Story offers unique and stylish women's fashion pieces from a selection of luxury designers.

102 Cockfosters Road,
Barnet EN4 0DP
020 8364 8181
storylondon.co.uk

Just under 2 miles away from Trent Park

THE GREAT OUTDOORS

Discovering fun, sporting activities and pursuits.



Computer generated image of Trent Park gym, indicative only



Trent Park tennis courts, indicative only



Trent Park Golf Club

With a range of indoor activities and outdoor pursuits, Trent Park is your playground and a place to spend time with like-minded people who enjoy the same things as you.

Life in Trent Park is an activity-seeker's paradise, with excellent facilities to push your game forward or ease you into a new sport.

Active lives make active minds, so they say. And at Trent Park, the whole family can stay fit and healthy, whilst having fun and making new friends. You can join an established rugby, hockey or cricket club, practise your putt and drive on the golf course. The nearby walking, cycling and running clubs also make for an exhilarating work-out in an inspiring setting.

CUFFLEY RUFC

A friendly, family community rugby football club.

East Lodge Lane, EN2 8AS
020 8363 4482
cuffleyrugby.co.uk

SOUTHGATE HOCKEY CLUB

Two pitches and excellent facilities create a fun and competitive arena for all abilities.

Trent Park, Snakes Lane, EN4 OPS
020 8440 7574
southgatehc.org.uk

COCKFOSTERS FC

Chalk Lane, EN4 clubwebsite.co.uk/cockfostersfc

BOTANY BAY CRICKET CLUB

A top class cricket club for players of all ages and abilities with matches throughout the summer.

East Lodge Lane, EN2 8AS
020 8363 4482
botanybaycc.co.uk

TRENT PARK RUNNING CLUB

An active community of trail, road and cross-country runners across all levels.

Snakes Lane, Oakwood, EN4 OPS
trentparkrc.org

TRENT PARK GOLF CLUB

A beautifully landscaped 18-hole course, situated in Oakwood.

Bramley Road, N14 4UW
020 8367 4653
trentparkgolf.co.uk

THE ORANGERY GYM & POOL

Trent Park's elegant open air swimming pool, popular with society guests of the 1920's, is now beautifully restored for residents of Trent Park, while the Orangery offers a fully fitted state-of-the-art gym.



Private showers



Free weights



Cardio equipment