

POPLAR
RIVERSIDE

E14

PORTER
HOUSE

St William
Designed for life

CITY RIVER PARK CLUB

CONTEMPORARY RIVERSIDE LIVING AT PORTER HOUSE

Sitting on the banks of the River Lea and the new 2.5 acre park, Porter House has an enviable position within the sought after Poplar Riverside. A vibrant new neighbourhood with a 500m riverside walk with a pub as well as cafes, a creche, supermarket and shops.

The collection of 176 contemporary apartments at Porter House all benefit from private outdoor space and a residents roof terrace with views over the beautifully landscaped park. The Riverside Club, located within Porter House, gives residents direct access to 16,000 sq ft of superb facilities.

Designed by Bergman Interiors, the Riverside Club includes a large co-working suite with open plan spaces, bookable meeting rooms as well as private outdoor terrace, a lobby-style Great Room, private cinema and games room. The first floor Riverside Spa features an impressive 20m pool, vitality pool, salt inhalation and steam room with wide views of the River Lea.

WELCOME TO POPLAR RIVERSIDE LIVING.

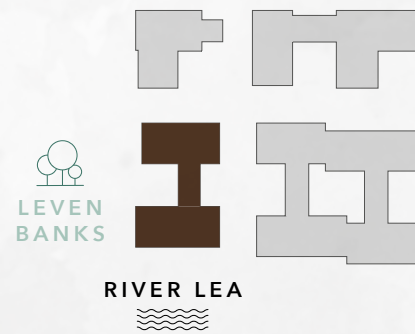


FLOORPLANS

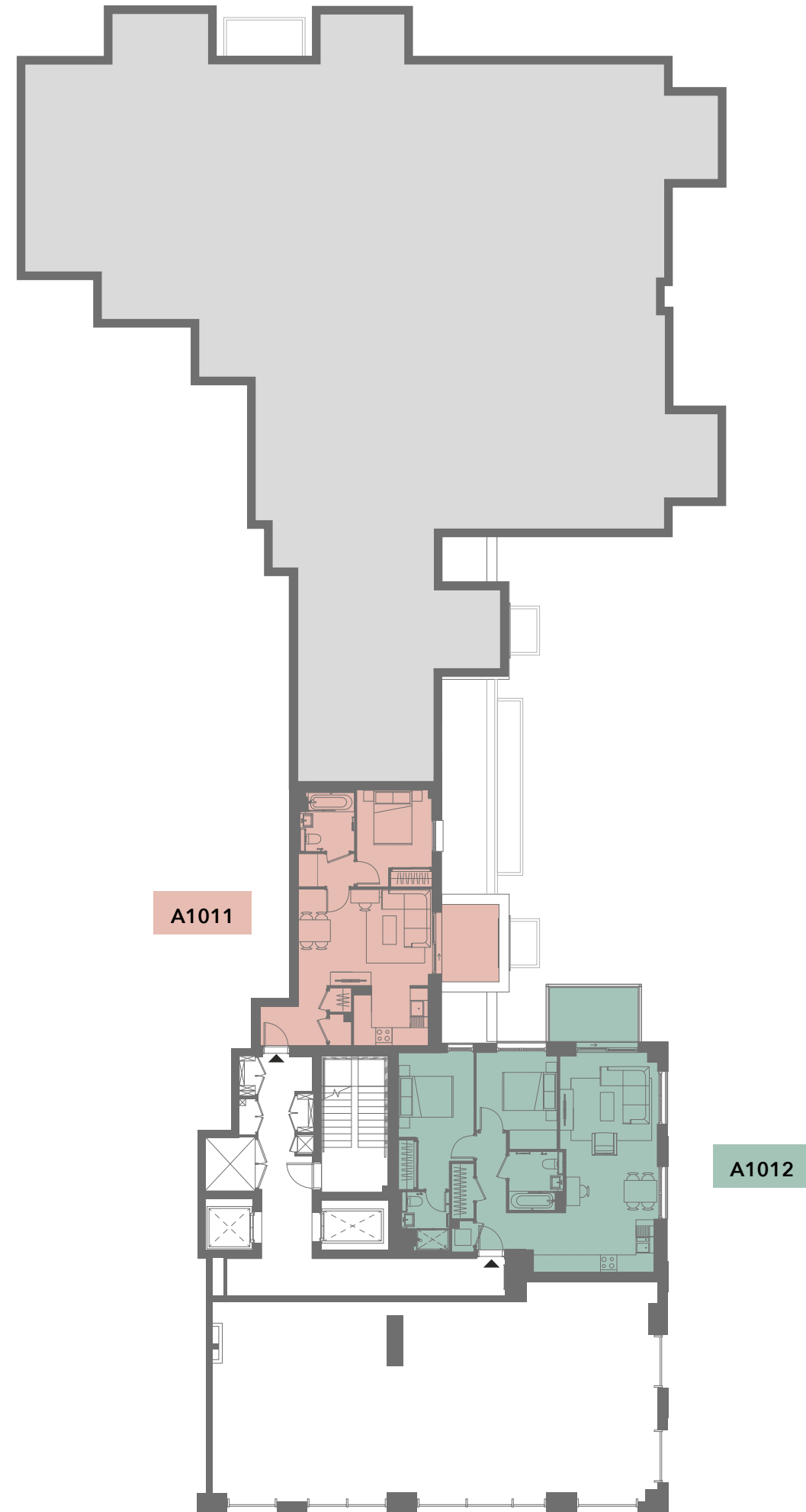
1ST FLOOR

- 1 bedroom suite
- 1 bedroom apartment
- 2 bedroom apartment
- 3 bedroom apartment

APT.	NO. BEDROOMS	TOTAL SQ M	TOTAL SQ FT
A1011	1 bedroom suite	47.5 sq m	511 sq ft
A1012	2 bedroom	72.5 sq m	780 sq ft



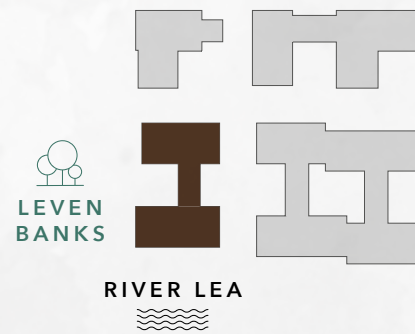
Floorplans shown for Poplar Riverside are for approximate measurements only. Exact layouts and sizes may vary. All measurements may vary within a tolerance of 5%. The dimensions are not intended to be used for carpet sizes, appliance sizes or items of furniture.



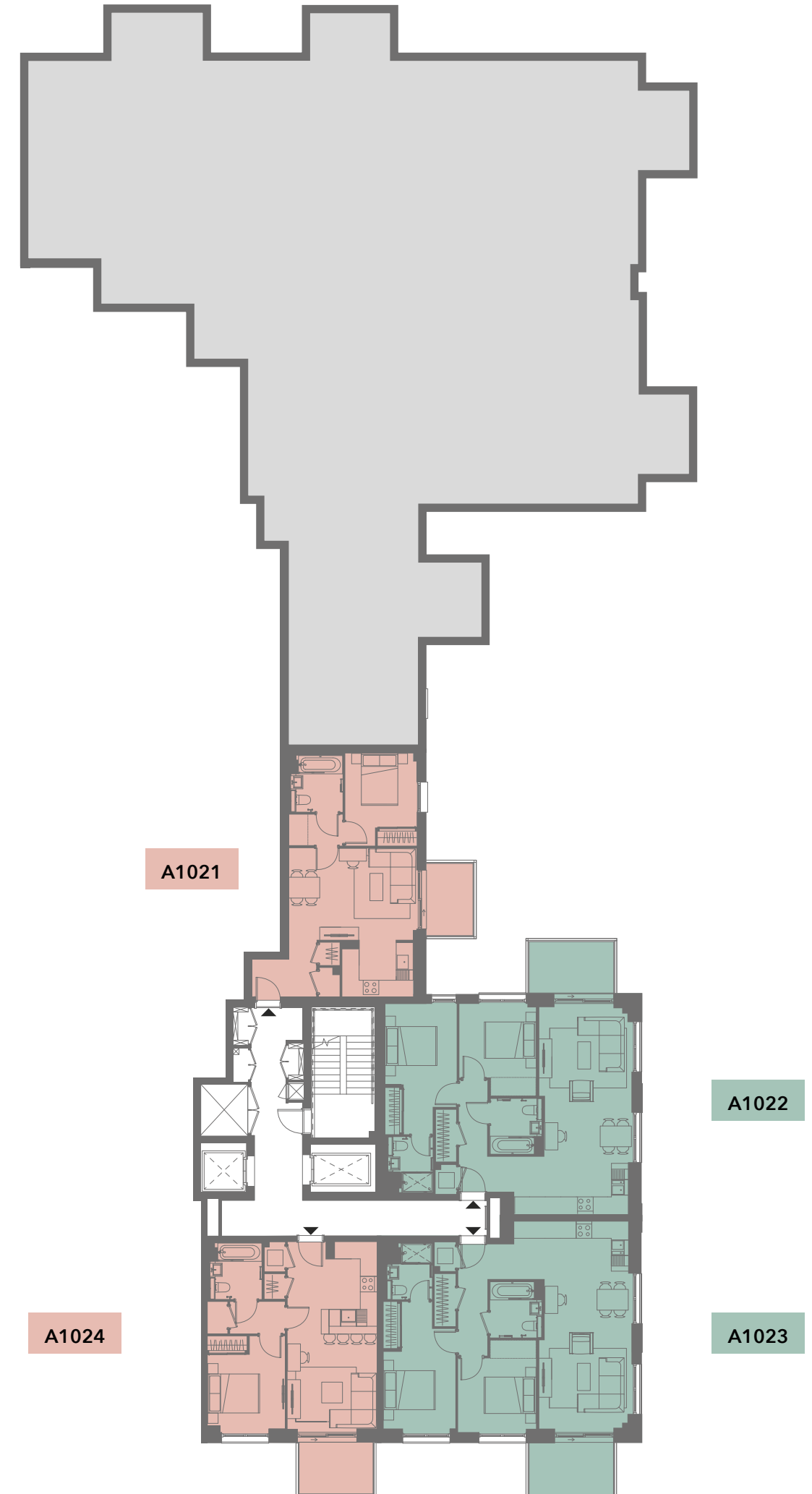
2ND FLOOR

- 1 bedroom suite
- 1 bedroom apartment
- 2 bedroom apartment
- 3 bedroom apartment

APT.	NO. BEDROOMS	TOTAL SQ M	TOTAL SQ FT
A1021	1 bedroom suite	47.5 sq m	511 sq ft
A1022	2 bedroom	72.5 sq m	780 sq ft
A1023	2 bedroom	72.9 sq m	785 sq ft
A1024	1 bedroom suite	47.5 sq m	511 sq ft



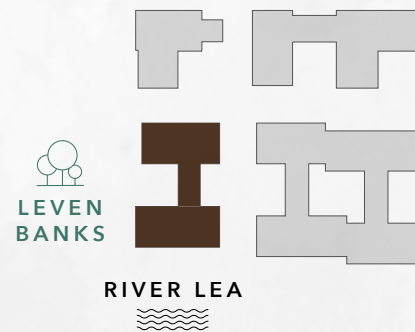
Floorplans shown for Poplar Riverside are for approximate measurements only. Exact layouts and sizes may vary. All measurements may vary within a tolerance of 5%. The dimensions are not intended to be used for carpet sizes, appliance sizes or items of furniture.



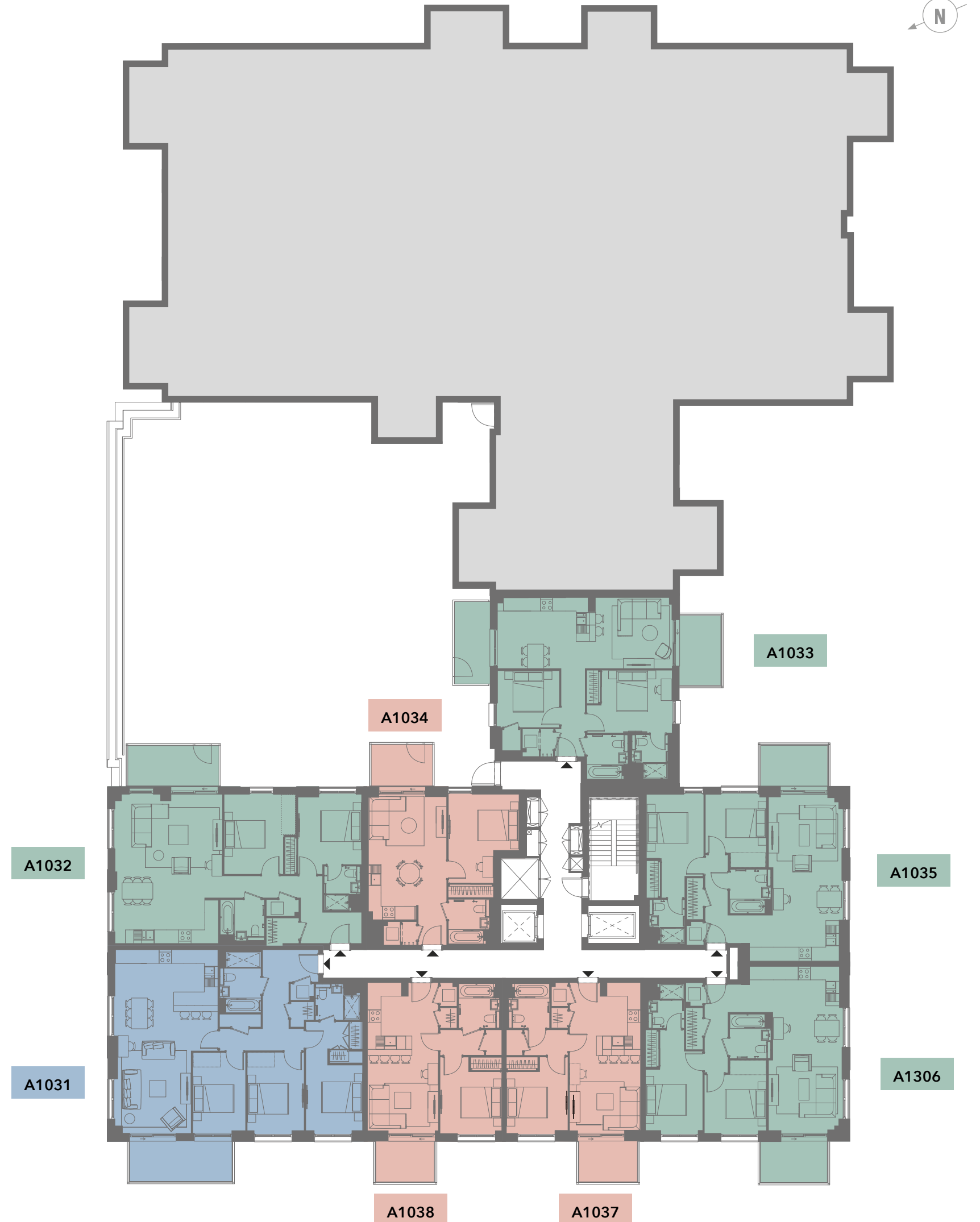
3RD FLOOR

- 1 bedroom suite
- 1 bedroom apartment
- 2 bedroom apartment
- 3 bedroom apartment

APT.	NO. BEDROOMS	TOTAL SQ M	TOTAL SQ FT
A1031	3 bedroom	103.2 sq m	1111 sq ft
A1032	2 bedroom	86.4 sq m	930 sq ft
A1033	2 bedroom	70.1 sq m	754 sq ft
A1034	1 bedroom suite	46.7 sq m	503 sq ft
A1035	2 bedroom	72.5 sq m	780 sq ft
A1036	2 bedroom	72.9 sq m	785 sq ft
A1037	1 bedroom suite	47.5 sq m	511 sq ft
A1038	1 bedroom suite	47.6 sq m </td <td>512 sq ft</td>	512 sq ft



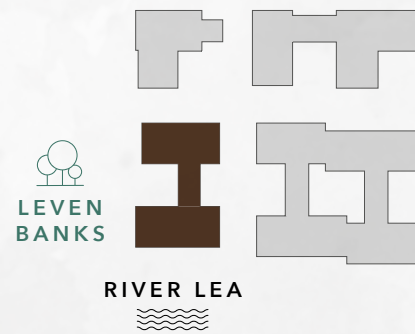
Floorplans shown for Poplar Riverside are for approximate measurements only. Exact layouts and sizes may vary. All measurements may vary within a tolerance of 5%. The dimensions are not intended to be used for carpet sizes, appliance sizes or items of furniture.



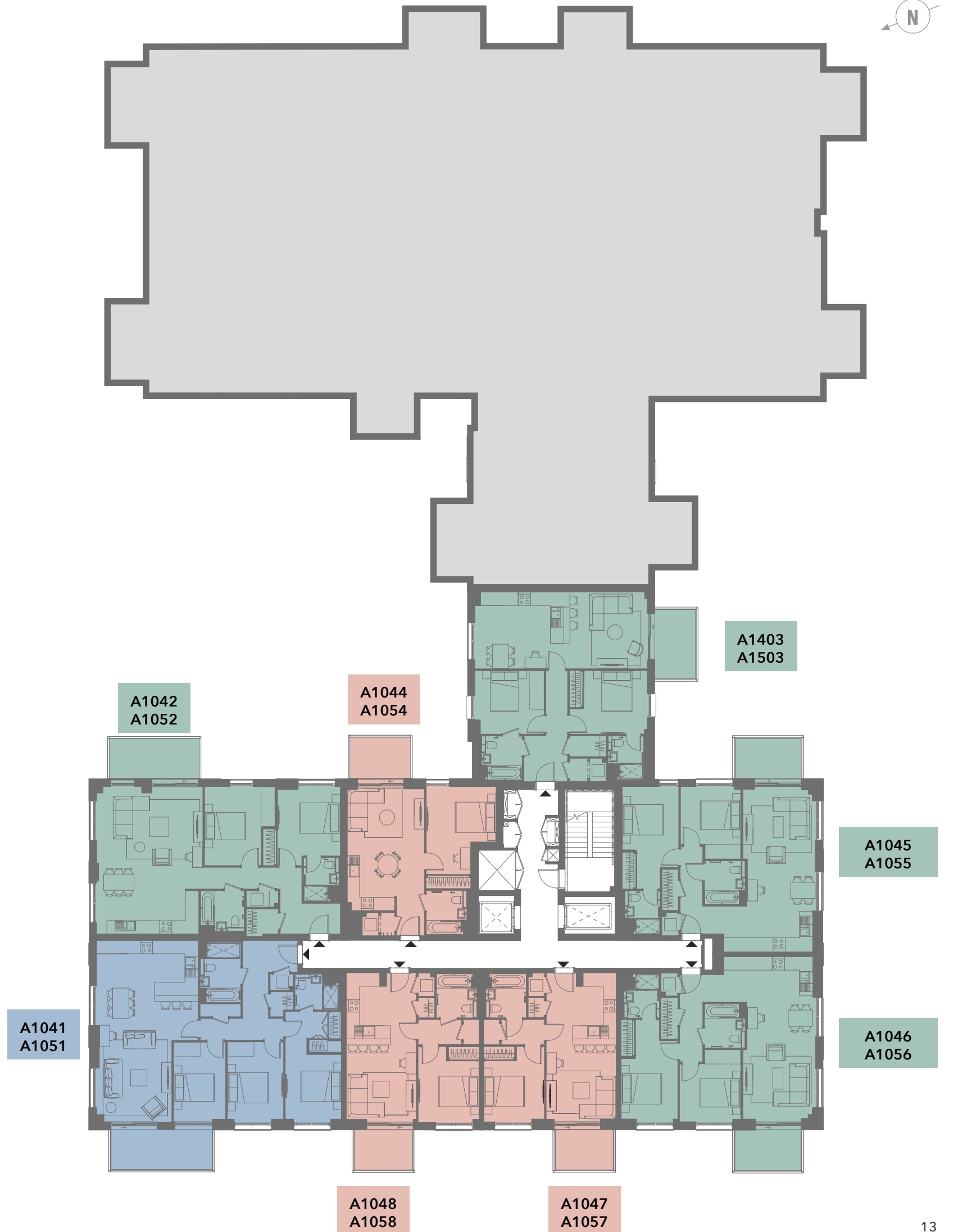
4TH & 5TH FLOOR

- 1 bedroom suite
- 1 bedroom apartment
- 2 bedroom apartment
- 3 bedroom apartment

APT.	NO. BEDROOMS	TOTAL SQ M	TOTAL SQ FT
A1041, A1051	3 bedroom	103.2 sq m	1111 sq ft
A1042, A1052	2 bedroom	86.4 sq m	930 sq ft
A1043, A1053	2 bedroom	78.1 sq m	841 sq ft
A1044, A1054	1 bedroom suite	46.7 sq m	503 sq ft
A1045, A1055	2 bedroom	72.5 sq m	780 sq ft
A1046, A1056	2 bedroom	72.9 sq m	785 sq ft
A1047, A1057	1 bedroom suite	47.5 sq m	511 sq ft
A1048, A1058	1 bedroom suite	47.6 sq m	512 sq ft



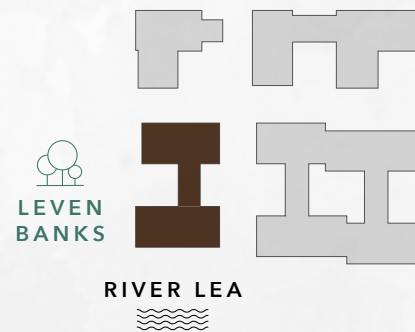
Floorplans shown for Poplar Riverside are for approximate measurements only. Exact layouts and sizes may vary. All measurements may vary within a tolerance of 5%. The dimensions are not intended to be used for carpet sizes, appliance sizes or items of furniture.



6TH - 8TH FLOOR

- 1 bedroom suite
- 1 bedroom apartment
- 2 bedroom apartment
- 3 bedroom apartment

APT.	NO. BEDROOMS	TOTAL SQ M	TOTAL SQ FT
A1061, A1071, A1081	3 bedroom	103.2 sq m	1111 sq ft
A1062, A1072, A1082	2 bedroom	86.4 sq m	930 sq ft
A1063, A1073, A1083	1 bedroom suite	46.7 sq m	503 sq ft
A1064, A1074, A1084	2 bedroom	72.5 sq m	780 sq ft
A1065, A1075, A1085	2 bedroom	72.9 sq m	785 sq ft
A1066, A1076, A1086	1 bedroom suite	47.5 sq m	511 sq ft
A1067, A1077, A1087	1 bedroom suite	47.6 sq m	512 sq ft



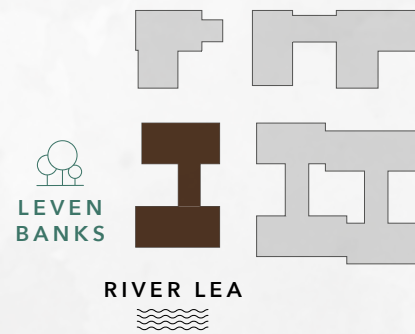
Floorplans shown for Poplar Riverside are for approximate measurements only. Exact layouts and sizes may vary. All measurements may vary within a tolerance of 5%. The dimensions are not intended to be used for carpet sizes, appliance sizes or items of furniture.



9TH - 12TH FLOOR

- 1 bedroom suite
- 1 bedroom apartment
- 2 bedroom apartment
- 3 bedroom apartment

APT.	NO. BEDROOMS	TOTAL SQ M	TOTAL SQ FT
A1091, A1101, A1111, A1121	3 bedroom	103.2 sq m	1111 sq ft
A1092, A1102, A1112, A1122	2 bedroom	86.4 sq m	930 sq ft
A1093, A1103, A1113, A1123	1 bedroom suite	46.7 sq m	503 sq ft
A1094, A1104, A1114, A1124	2 bedroom	72.5 sq m	780 sq ft
A1095, A1105, A1115, A1125	2 bedroom	72.9 sq m	785 sq ft
A1096, A1106, A1116, A1126	1 bedroom suite	47.5 sq m	511 sq ft
A1097, A1107, A1117, A1127	1 bedroom suite	47.6 sq m	512 sq ft



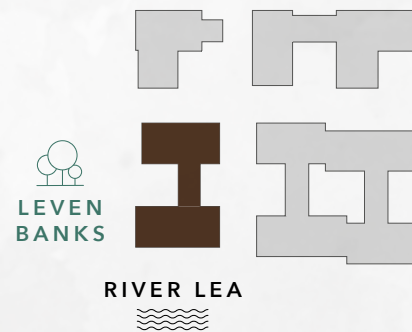
Floorplans shown for Poplar Riverside are for approximate measurements only. Exact layouts and sizes may vary. All measurements may vary within a tolerance of 5%. The dimensions are not intended to be used for carpet sizes, appliance sizes or items of furniture.



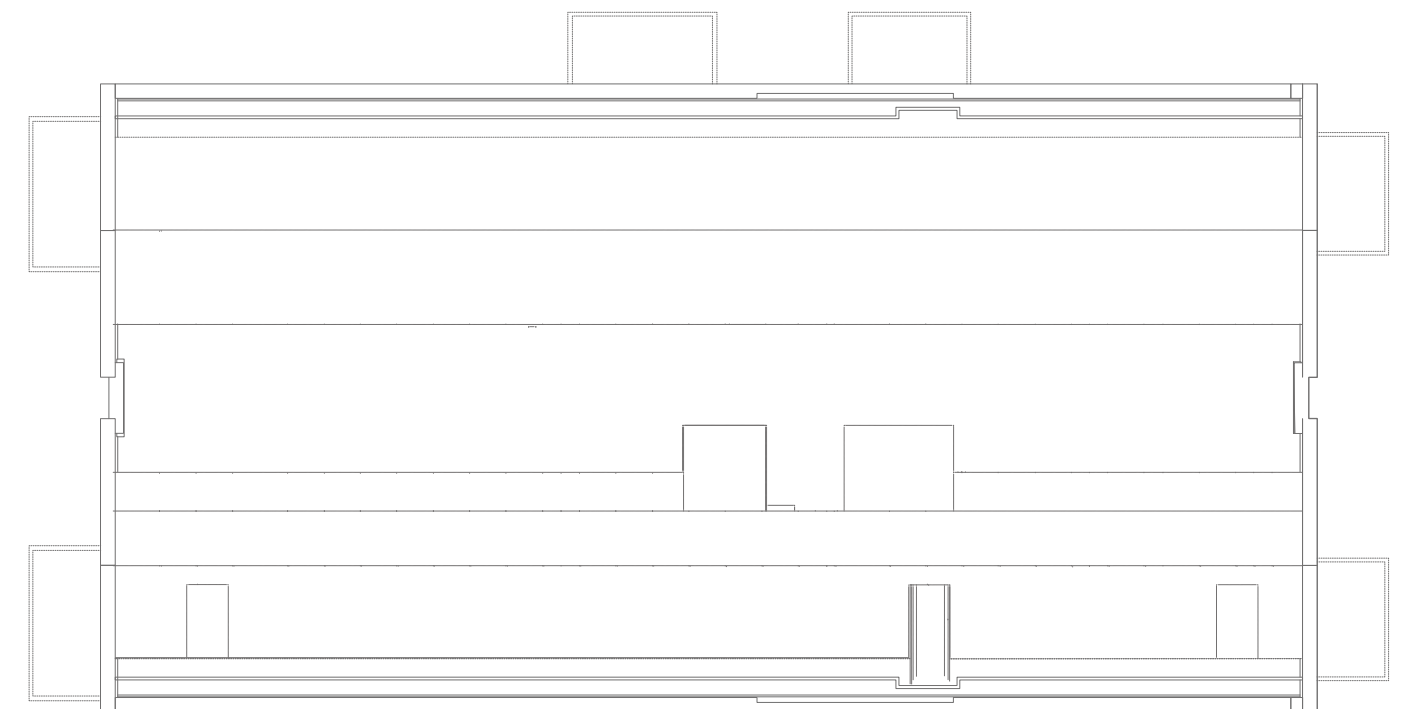
13TH FLOOR

- 1 bedroom suite
- 1 bedroom apartment
- 2 bedroom apartment
- 3 bedroom apartment

APT.	NO. BEDROOMS	TOTAL SQ M	TOTAL SQ FT
A1131	3 bedroom	103.2 sq m	1111 sq ft
A1132	2 bedroom	86.4 sq m	930 sq ft
A1133	1 bedroom suite	46.7 sq m	503 sq ft
A1134	2 bedroom	72.5 sq m	780 sq ft
A1135	2 bedroom	72.9 sq m	785 sq ft
A1136	1 bedroom suite	47.5 sq m	511 sq ft
A1137	1 bedroom suite	47.6 sq m	512 sq ft



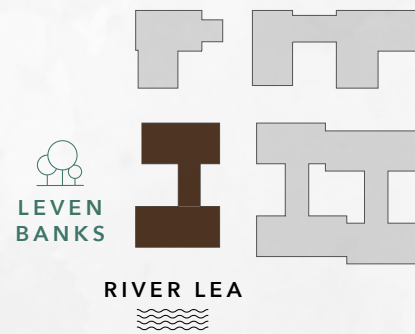
Floorplans shown for Poplar Riverside are for approximate measurements only. Exact layouts and sizes may vary. All measurements may vary within a tolerance of 5%. The dimensions are not intended to be used for carpet sizes, appliance sizes or items of furniture.



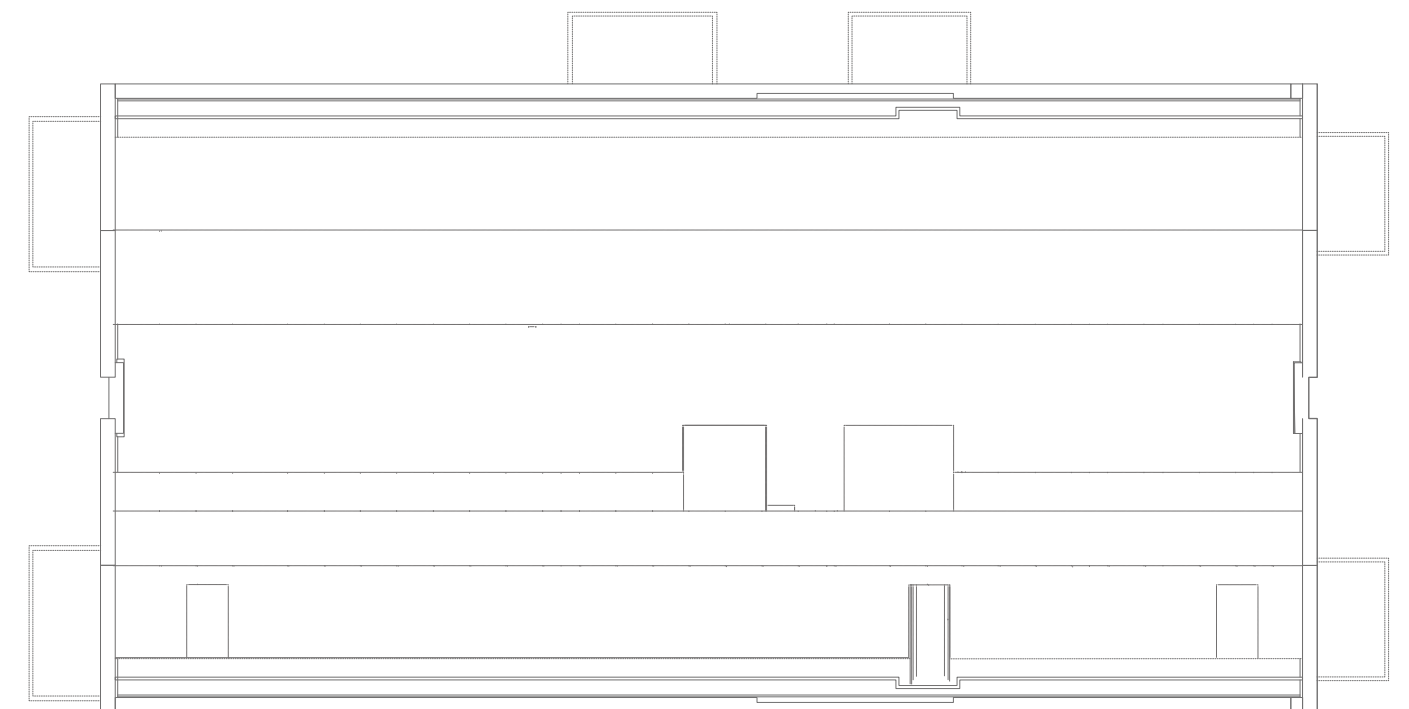
14TH FLOOR

- 1 bedroom suite
- 1 bedroom apartment
- 2 bedroom apartment
- 3 bedroom apartment

APT.	NO. BEDROOMS	TOTAL SQ M	TOTAL SQ FT
A1141	3 bedroom	103.2 sq m	1111 sq ft
A1142	2 bedroom	86.4 sq m	930 sq ft
A1143	1 bedroom suite	46.7 sq m	503 sq ft
A1144	2 bedroom	72.5 sq m	780 sq ft
A1145	2 bedroom	72.9 sq m	785 sq ft
A1146	1 bedroom suite	47.5 sq m	511 sq ft
A1147	1 bedroom suite	47.6 sq m	512 sq ft



Floorplans shown for Poplar Riverside are for approximate measurements only. Exact layouts and sizes may vary. All measurements may vary within a tolerance of 5%. The dimensions are not intended to be used for carpet sizes, appliance sizes or items of furniture.



THE RIVERSIDE

Club



GROUND FLOOR



GROUND FLOOR RESIDENTS FACILITIES

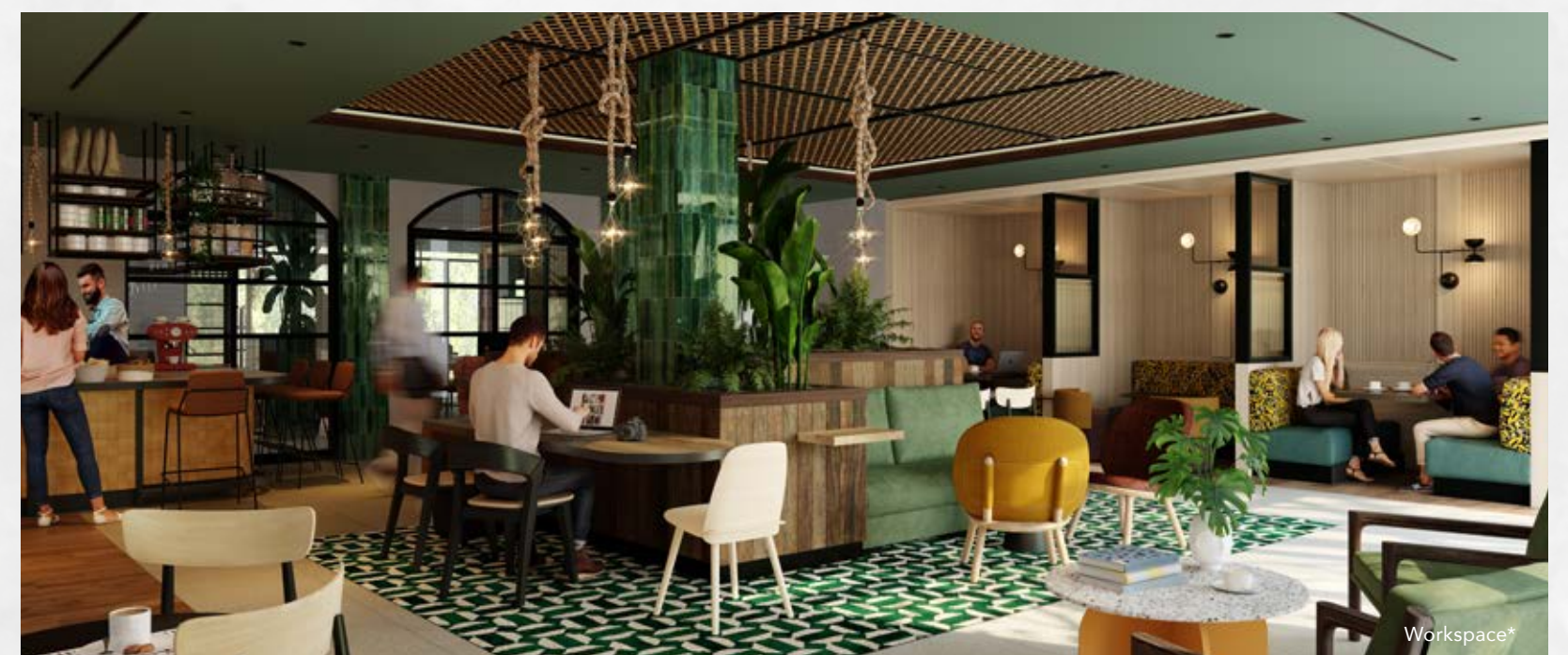
- 1. Meeting room
- 2. The Workspace
- 3. Private call booth
- 4. The Great Room
- 5. Games room
- 6. Cinema room
- 7. Cards room



Cards room



Residents' lounge



Workspace*

FIRST FLOOR



FIRST FLOOR RESIDENTS FACILITIES

- 1. Residents' lounge
- 2. Spa reception
- 3. Changing rooms
- 4. Steam room
- 5. Sauna
- 6. Experience shower
- 7. Salt room
- 8. Vitality pool
- 9. 20m swimming pool



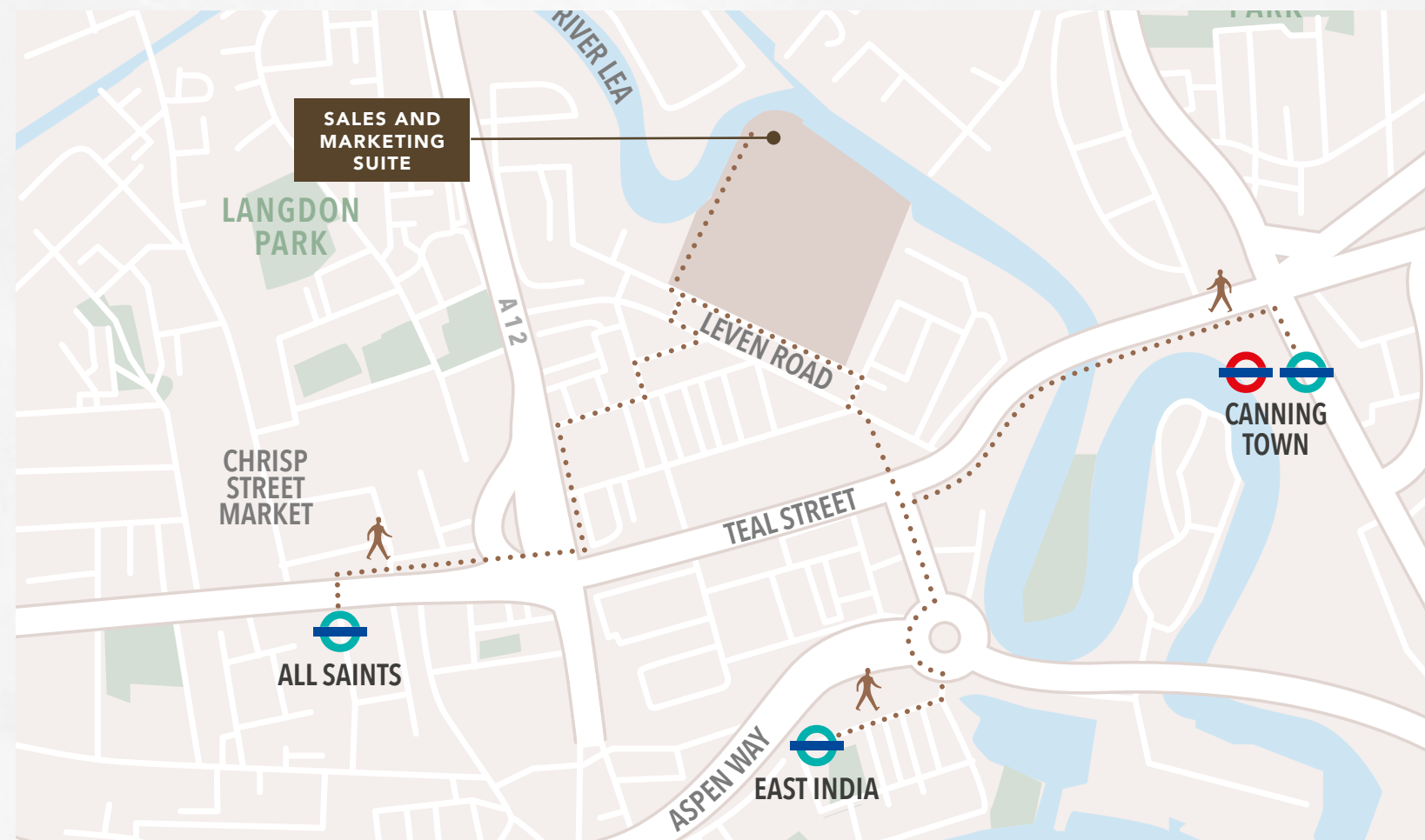
20m swimming pool



Spa reception



Salt room



VISIT OUR SALES AND MARKETING SUITE OR BOOK A VIRTUAL VIEWING:

@BerkeleyGroupUK
 berkeley_group

WWW.POPLARRIVERSIDE.CO.UK

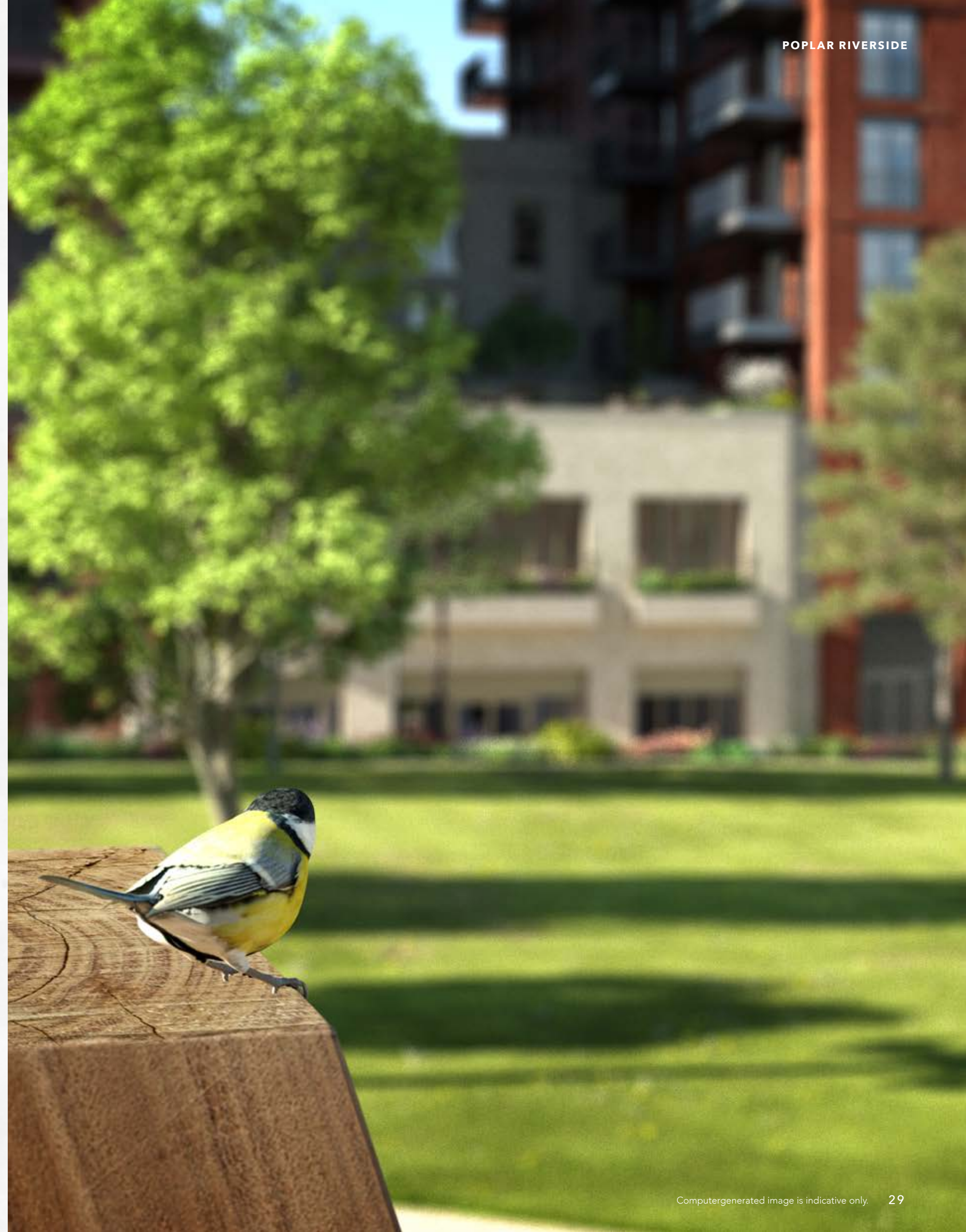
Poplar Riverside Sales and Marketing Suite
 Leven Road, Poplar, London E14 0GQ

Monday - Saturday 10am - 6pm.
 Sunday and Bank Holidays 10am - 4pm

020 3326 2617
 sales.poplarriverside@stwilliam.co.uk



The information in this document is indicative and is intended to act as a guide only as to the finished product. Accordingly, due to St William's policy of continuous improvement, the finished product may vary from the information provided. These particulars should not be relied upon as statements of fact or representations and applicants must satisfy themselves by inspection or otherwise as to their correctness. This information does not constitute a contract or warranty. Poplar Riverside is a marketing name and will not necessarily form part of the approved postal address. Applicants are advised to contact St William to ascertain the availability of any particular property. Floorplans shown for Poplar Riverside are for approximate measurements only. Exact layouts and sizes may vary. All measurements may vary within a tolerance of 5%. The dimensions are not intended to be used for carpet sizes, appliance sizes or items of furniture. Computergenerated images are indicative only and subject to change. Lifestyle images and illustrations are indicative only. Maps are not to scale and show approximate locations only. Travel times taken from google.co.uk/maps, tfl.gov.uk and crossrail.co.uk. Your attention is drawn to the fact that it may not be possible to provide the branded products as referred to in the specification. In such cases, a similar alternative will be provided. St William reserves the right to make these changes as required. A number of choices and options are available to personalise your home. Choices and options are subject to time frames, availability and change. W351/23CA/0522 Computergenerated images are indicative only and subject to change.



PORTER HOUSE